

LETO 44 PLUS S SML

SURFACE MOUNT LED DOWNLIGHT



Leto 44 Plus S SML - Surface LED Light. The Leto 44 Plus S SML is a square column best suited to general lighting. As a surface mount, it can also be easily adapted for other applications or design choices.

Ordering Code

Fixture	714							
	1	2	3	4	5	6	7	8
Driver			--	--				
	1	2	3	4				

Product Specifications

SAMPLE: Fixture **714 - A90 - 610 - 27 - 07 - HO - 08 - 01** | Driver **STD - 120 - A90 - 07**

1 - Model	2 - LED	3 - Optic	4 - CCT	5 - Lumen	6 - Accessory
714 · Leto 44 Plus Small Surface Mount	A90 · Accuracy	610 · 10° 618 · 18° 630 · 30° 645 · 45° 660 · 60°	25 · 2500K 27 · 2700K 30 · 3000K 35 · 3500K 40 · 4000K 65 · 6500K	07 · 700 (6.5W) 10 · 1000 (9.3W) 15 · 1500 (12.5W)	00 · No Accessory DL · Diffusing Lens HO · Honeycomb SL · Solite Lens

7 - Body Color		8 - Baffle Color		1 - Driver		Dim Level	Dim Level
<i>Standard</i>	<i>Premium</i>	<i>Standard</i>	<i>Premium</i>	STD · Non Dimming	N/A	LUT2W · 2 Wire for phase*1	1%
01 · White	52 · Mocha	01 · White	52 · Mocha	LCS · 0 - 10 Volt Protocol	1%	LUT5S · 5 Series Eco System	5%
02 · Black	53 · Charcoal	02 · Black	53 · Charcoal	DIM · Phase*1	1%	DMX · Senso	
08 · Silver	54 · Cerulean	08 · Silver	54 · Cerulean	ELDOLC · EldoLED 0 - 10 Volt	0.1%	EMG · Emergency Driver*2/3	
	55 · Firebrick		55 · Firebrick	DALI · Dali Protocol	0.1%	CSMB · Casambi Wireless Control*2/3	
	XX · RAL		XX · RAL	LUTES · Hilume Ecodigital	1%		

2 - Voltage	3 - LED	4 - Lumen		
120 · 120V 277 · 277V 347 · 347V*4	Same as Fixture	Same as Fixture	*1 120V only *2 remote mount *3 second driver required *4 not available with ELDO, Lutron or DMX	Project : _____ Quantity : _____ Type : _____ Notes : _____



LETO 44 PLUS S SML

SURFACE MOUNT LED DOWNLIGHT

Reflector

Faceted Reflector

Senso metal spun faceted reflectors are specifically designed to retain as much light as possible. This results in a more power efficient fixture with a higher delivered lumen.



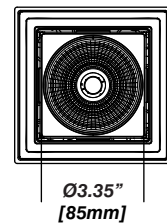
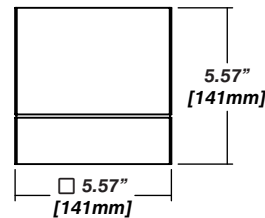
Installation

- Mounting plate included
- Easy, single motion installation method

Construction / Finish

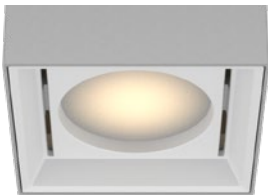
- High quality, scratch resistant powder coated finish in standard, premium or custom colors
- Aluminum extruded Body
- Made in Canada

Dimensions

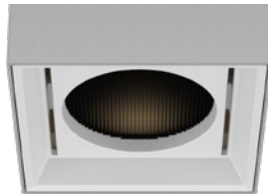


Accessories

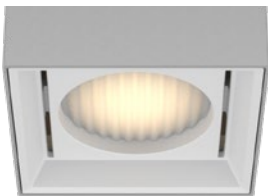
Diffusing Lens



Honeycomb Mesh



Solite Lens



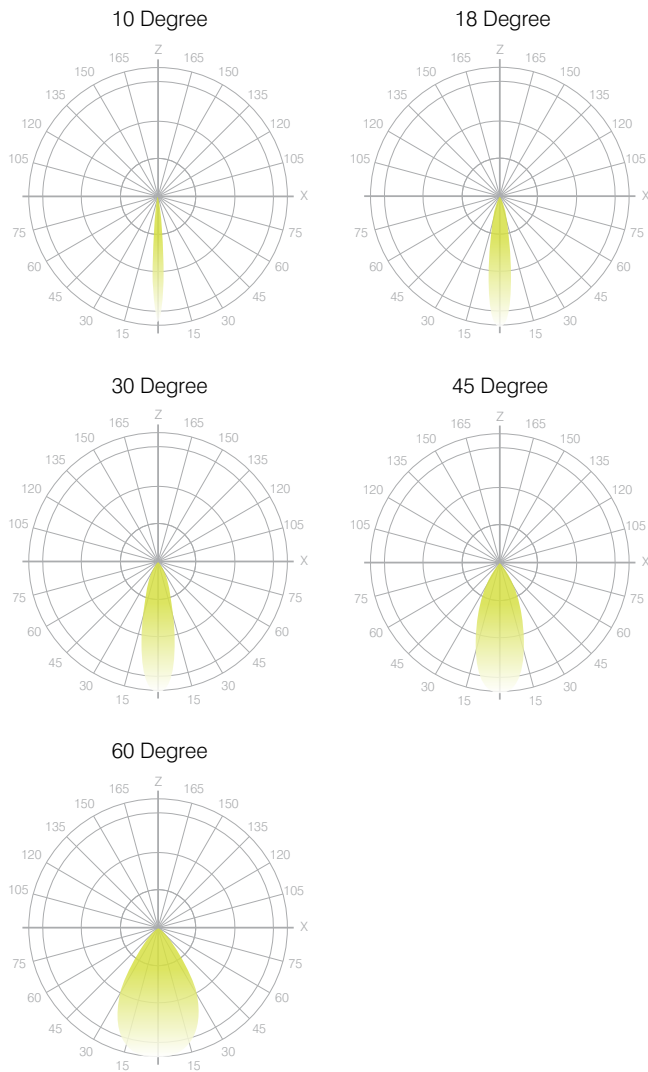
LETO 44 PLUS S SML

SURFACE MOUNT LED DOWNLIGHT

Senso's in-house photometric testing ensures that our lighting design can match your needs precisely. Our Goniophotometer and testing lab produces on-demand photometry files based on any specified fixture, including LM-79 Test reports, IES Files, and CRI/CCT measurements. See Sensolighting.com for more information.

**Full photometric Reports and IES files available for every configuration*

Leto 44 Light Distribution



Color Metrics

TM 30-15

Our clients deserve the best information possible about their lighting choices. That's why Senso has invested in the Illuminating Engineering Society (IES) TM 30-15, a new system that measures an LED light source's color rendering properties. Using Senso's state-of-the-art goniophotometer, this method identifies the optimal light source for your project and helps evaluate the trade-offs between efficacy and color rendering. Senso can provide TM 30-15 data for all of our products.

**Full Color Metric Info Available at Sensolighting.com*

LED Module Performance

Output: Up to 150 lumen/Watt

Efficacy: Color consistency within a 3-MacAdam Ellipse

CCT: 2500K - 6500K

Color Rendering: 90+ CRI

Min. R Values: R⁹ - 60 R¹ - 90 R⁹ - 100

Driver and Power Consumption

Dimming: 1% dimming standard with 0.1% option

Ripple: Industry leading Low ripple

Efficiency: Power Factor >0.9

Efficiency over 85%

Class 2 output for safety

Installation: Canopy or remote mounted

Lumen Option	700lm	1000lm	1500lm
Fixture Wattage	6.5W	9.3W	12.5W
Delivered Lumen	656lm	1035lm	1347lm

LETO 44 PLUS S SML

SURFACE MOUNT LED DOWNLIGHT

Performance Modules

Designer - The Designer module is custom formulated to provide outstanding color rendering while retaining high efficacy.



Output: Up to 125 lumen/Watt

Efficacy: Color consistency within 1x2 MacAdam Ellipses

CCT: 2700K - 4000K

Color Rendering: 90+ CRI

Min. R Values: R⁹ - 55 R¹ - 88 R⁹ - 101

Accuracy - A great all-around performer, the A90 combines efficiency with superior everyday performance.



Output: Up to 150 lumen/Watt

Efficacy: Color consistency within a 3-MacAdam Ellipse

CCT: 2500K - 6500K

Color Rendering: 90+ CRI

Min. R Values: R⁹ - 60 R¹ - 90 R⁹ - 100

Specialized Modules

Artist - Artist module is virtually indistinguishable from halogen light, and delivers high quality, natural light that is efficient and long lasting.

Vibrancy - Vibrancy Series enables us to see colors, hues and tones, that are real, but simply aren't visible under halogen light.

Beauty - Beauty Series makes it possible to precisely tune the spectrum to deliver extraordinary clarity and fidelity for settings where people are the focus.

CCT: 2700 - 4000
CRI: 95+

Min. R Values
R⁹: 95
R¹: 96
R⁹: 103

CCT: 3000
CRI: 80+, 95+

Min. R Values
80 CRI / 95 CRI
R⁹: 28 / 96
R¹: 73 / 96
R⁹: 105 / 103

CCT: 2700
CRI: 93+

Min. R Values
R⁹: 95
R¹: 91
R⁹: 107

Driver and Power Consumption

Dimming: 1% dimming standard with 0.1% option
Ripple: Industry leading Low ripple
Efficiency: Power Factor >0.9
Efficiency over 85%
Class 2 output for safety
Installation: Canopy or remote mounted

	Lumen Option	700lm	1000lm	1300lm
90 CRI Designer	Fixture Wattage	7.7W	11.0W	14.5W
	Delivered Lumen	725lm	965lm	1313lm
90 CRI Accuracy	Fixture Wattage	6.5W	9.3W	12.5W
	Delivered Lumen	656lm	1035lm	1347lm