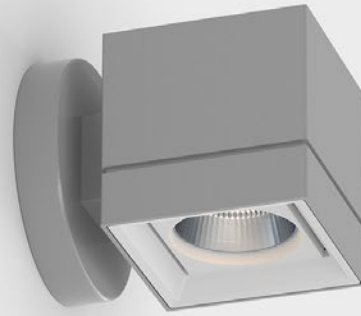


LETO 44 WM SML

WALL MOUNT LED DOWNLIGHT



Leto 44 WM SML - Wall Mount LED Light. Leto 44 WM SML is a short wall mounted cylinder LED fixture designed to provide a space with indirect down lighting. It is the perfect solution for creating subtle light in your space without distracting from your design.

Ordering Code

| | | | | | | | | |
|---------|------------|---|---|----|----|---|---|---|
| Fixture | 717 | | | | | | | |
| | 1 | 2 | 3 | 4 | 5 | 6 | 7 | 8 |
| Driver | | | | -- | -- | | | |
| | 1 | 2 | 3 | 4 | 5 | | | |

Product Specifications

SAMPLE: Fixture **717 - A90 - 615 - 27 - 07 - DL - 08 - 02** | Driver **910 - STD - 120 - A90 - 07**

| 1 - Model | 2 - LED | 3 - Optic | 4 - CCT | 5 - Lumen | 6 - Accessory | 7 - Body Color | |
|--|-----------------------|--|--|---|--|---|---|
| 717 · Leto 44 Small Wall Mount | A90 · Accuracy | 615 · 15° 630 · 30° 645 · 45° 660 · 60° | 25 · 2500K 27 · 2700K 30 · 3000K 35 · 3500K 40 · 4000K 65 · 6500K | 07 · 700 (6.5W) 10 · 1000 (9.3W) | 00 · No Accessory DL · Diffusing Lens HO · Honeycomb SL · Solite Lens | <i>Standard</i> 01 · White 02 · Black 08 · Silver | <i>Premium</i> 52 · Mocha 53 · Charcoal 54 · Cerulean 55 · Firebrick XX · RAL |

| 8 - Baffle Color | 1 - Housing | 2 - Driver*2 | Dim Level | Dim Level | |
|---|---|------------------------------------|--|---------------------------------------|--|
| <i>Standard</i> 01 · White 02 · Black 08 · Silver | <i>Premium</i> 52 · Mocha 53 · Charcoal 54 · Cerulean 55 · Firebrick XX · RAL | 910 · Remote Driver Housing | STD · Non Dimming LCS · 0 - 10 Volt Protocol DIM · Phase*1 ELDOLC · EldoLED 0 - 10 Volt DALI · Dali Protocol LUTES · Hillume Ecodigital | N/A 1% 1% 0.1% 0.1% 1% | LUT2W · 2 Wire for phase*1 LUT5S · 5 Series Eco System DMX · Senso EMG · Emergency Driver*3 CSMB · Casambi Wireless Control*3 |

| 3 - Voltage | 4 - LED | 5 - Lumen |
|---|-----------------|-----------------|
| 120 · 120V 277 · 277V 347 · 347V*4 | Same as Fixture | Same as Fixture |

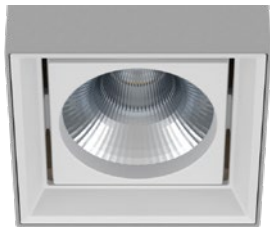
*1 120V only
*2 remote mount
*3 second driver required
*4 not available with ELDO, Lutron or DMX

LETO 44 WM SML

WALL MOUNT LED DOWNLIGHT

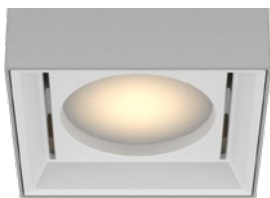
Reflector

Senso metal spun faceted reflectors are specifically designed to retain as much light as possible. This results in a more power efficient fixture with a higher delivered lumen.

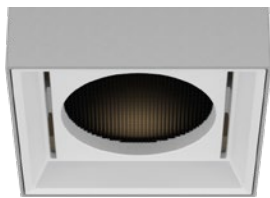


Accessories

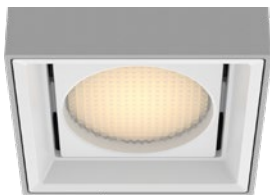
Diffusing Lens



Honeycomb Mesh



Solite Lens



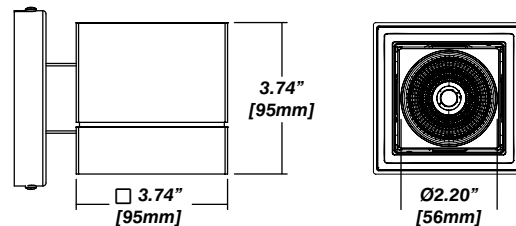
Installation

- Mounting plate included
- Easy, single motion installation method

Construction / Finish

- High quality, scratch resistant powder coated finish in standard, premium or custom colors
- Aluminum extruded Body
- Made in Canada

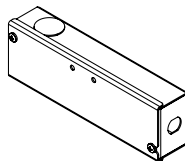
Dimensions



Senso Driver Housings

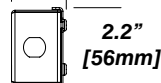
Single Remote Driver Housing

- Fits Standard, LCS or DIM drivers
- Galvanized steel enclosure
- For remote driver applications

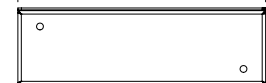


Dimensions

1.5"
[39mm]

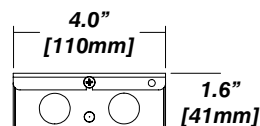
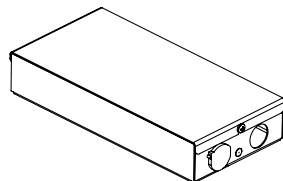


7.0"
[177mm]



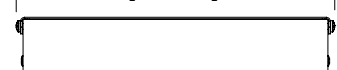
Double Remote Driver Housing

- Fits all drivers
- Galvanized steel enclosure
- For remote driver applications



4.0"
[110mm]

9.0"
[229mm]



LETO 44 WM SML

WALL MOUNT LED DOWNLIGHT

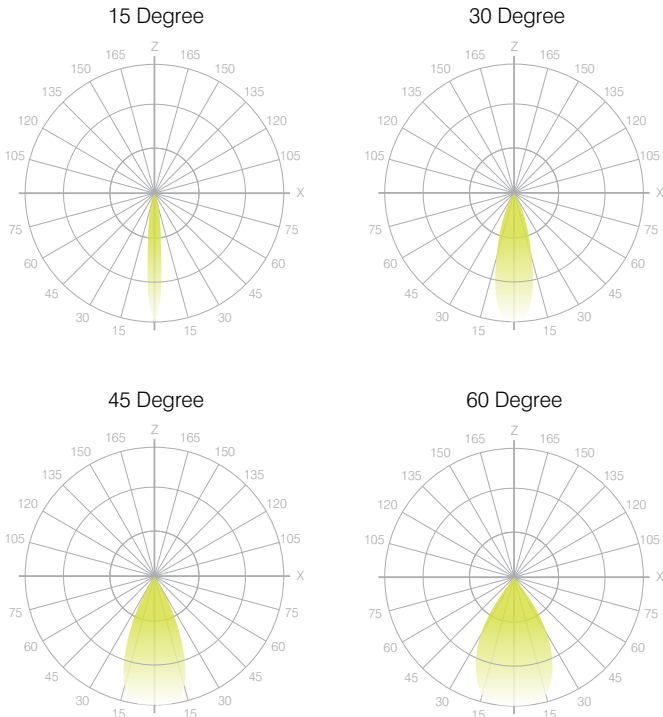


Photometrics

Senso's in-house photometric testing ensures that our lighting design can match your needs precisely. Our Goniophotometer and testing lab produces on-demand photometry files based on any specified fixture, including LM-79 Test reports, IES Files, and CRI/CCT measurements. See Sensolighting.com for more information.

**Full photometric Reports and IES files available for every configuration*

Leto 44 Light Distribution



Color Metrics

TM 30-15

Our clients deserve the best information possible about their lighting choices. That's why Senso has invested in the Illuminating Engineering Society (IES) TM 30-15, a new system that measures an LED light source's color rendering properties. Using Senso's state-of-the-art goniophotometer, this method identifies the optimal light source for your project and helps evaluate the trade-offs between efficacy and color rendering. Senso can provide TM 30-15 data for all of our products.

**Full Color Metric Info Available at Sensolighting.com*

LED Module Performance

- Output:** Up to 150 lumen/Watt
- Efficacy:** Color consistency within a 3-MacAdam Ellipse
- CCT:** 2500K - 6500K
- Color Rendering:** 90+ CRI
- Min. R Values:** R⁹ - 60 R^f - 90 R^a - 100

Driver and Power Consumption

- Dimming:** 1% dimming standard with 0.1% option
Casambi wireless control available
- Ripple:** Industry leading Low ripple
- Efficiency:** Power Factor >0.9
Efficiency over 85%
Class 2 output for safety
- Installation:** Remote mounted

| | | |
|------------------------|-------|--------|
| Lumen Option | 700lm | 1000lm |
| Fixture Wattage | 6.5W | 9.3W |
| Delivered Lumen | 656lm | 1035lm |