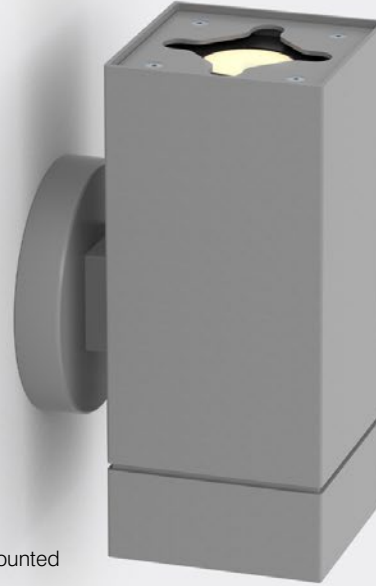


LETO 44 WM UD LRG

WALL MOUNT LED UPLIGHT AND DOWNLIGHT



Leto 44 WM UD LRG - Wall Mount LED Light. Leto 44 WM UD LRG is a wall mounted square LED fixture designed to provide a space with indirect and direct lighting.

Ordering Code

Fixture	724							
	1	2	3	4	5	6	7	8
Driver				--	--			
	1	2	3	4	5			

Product Specifications

SAMPLE: Fixture 724 - A90 - 615 - 27 - 0707 - DL - 08 - 01 | Driver 910 - STD - 120 - A90 - 0707

1 - Model	2 - LED	3 - Optic Direct	4 - CCT	5 - Lumen	6 - Accessory Direct	7 - Body Color
724 · Leto 44 Large Direct and Indirect Wall Mount	A90 · Accuracy	615 · 15° 630 · 30° 645 · 45° 660 · 60° <i>Fixed 40° indirect optic</i>	25 · 2500K 27 · 2700K 30 · 3000K 35 · 3500K 40 · 4000K 65 · 6500K	<i>Direct</i> <i>Indirect</i> 07 · 700 07 · 700 10 · 1000 10 · 1000 15 · 1500 20 · 2000	00 · No Accessory DL · Diffusing Lens HO · Honeycomb SL · Solite Lense <i>Fixed Diffusing lens for indirect optic</i>	<i>Standard</i> <i>Premium</i> 01 · White 52 · Mocha 02 · Black 53 · Charcoal 08 · Silver 54 · Cerulean 55 · Firebrick XX · RAL

8 - Baffle Color	1 - Housing	2 - Driver	Dim Level	Dim Level
<i>Standard</i> <i>Premium</i> 01 · White 52 · Mocha 02 · Black 53 · Charcoal 08 · Silver 54 · Cerulean 55 · Firebrick XX · RAL	00 · Integral Driver 910 · Remote Driver Housing	STD · Non Dimming LCS · 0 - 10 Volt Protocol DIM · Phase ^{*1} ELDOLC · EldoLED 0 - 10 Volt ^{*2} DALI · Dali Protocol ^{*2} LUTES · Hilume Ecodigital ^{*2}	N/A 1% 1% 0.1% 0.1% 1%	LUT2W · 2 Wire for phase ^{*1/2} 1% LUT5S · 5 Series Eco System ^{*2} 5% DMX · Senso ^{*2} EMG · Emergency Driver ^{*3} CSMB · Casambi Wireless Control ^{*2/3}

3 - Voltage	4 - LED	5 - Lumen
120 · 120V 277 · 277V 347 · 347V ^{*4}	Same as Fixture	Same as Fixture

^{*1} 120V only
^{*2} remote mount
^{*3} second driver required
^{*4} not available with ELDO, Lutron or DMX

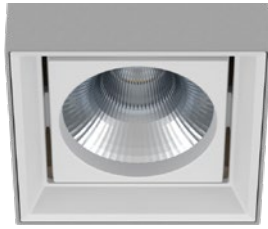
LETO 44 WM UD LRG

WALL MOUNT LED UPLIGHT AND DOWNLIGHT



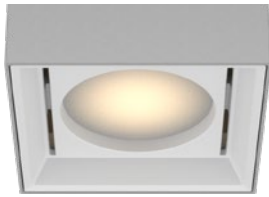
Reflector

Senso metal spun faceted reflectors are specifically designed to retain as much light as possible. This results in a more power efficient fixture with a higher delivered lumen.

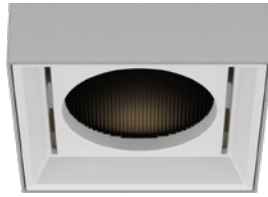


Accessories

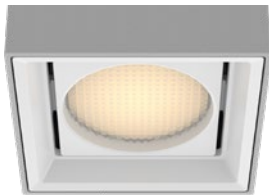
Diffusing Lens



Honeycomb Mesh



Solite Lens



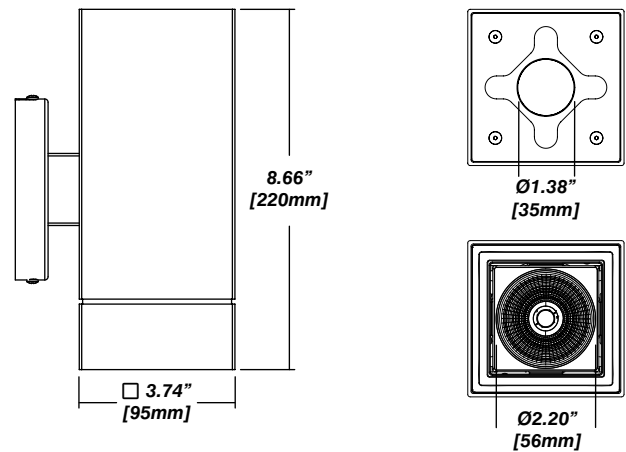
Installation

- Mounting plate included
- Easy, single motion installation method

Construction / Finish

- High quality, scratch resistant powder coated finish in standard, premium or custom colors
- Aluminum extruded Body
- Made in Canada

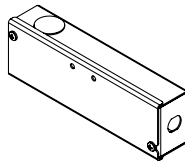
Dimensions



Senso Driver Housings

Single Remote Driver Housing

- Fits Standard, LCS or DIM drivers
- Galvanized steel enclosure
- For remote driver applications



Dimensions

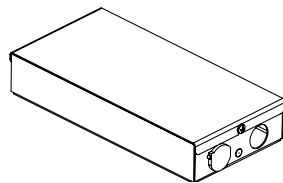
1.5"
[39mm]

2.2"
[56mm]

7.0"
[177mm]

Double Remote Driver Housing

- Fits all drivers
- Galvanized steel enclosure
- For remote driver applications



4.0"
[110mm]

1.6"
[41mm]

9.0"
[229mm]

LETO 44 WM UD LRG

WALL MOUNT LED UPLIGHT AND DOWNLIGHT

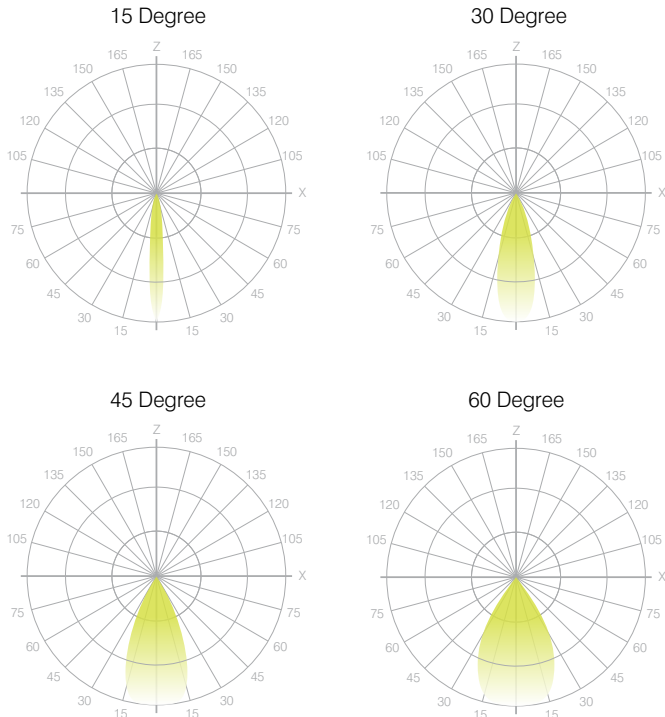


Photometrics

Senso's in-house photometric testing ensures that our lighting design can match your needs precisely. Our Goniophotometer and testing lab produces on-demand photometry files based on any specified fixture, including LM-79 Test reports, IES Files, and CRI/CCT measurements. See Sensolighting.com for more information.

**Full photometric Reports and IES files available for every configuration*

Leto 44 Light Distribution



Color Metrics

TM 30-15

Our clients deserve the best information possible about their lighting choices. That's why Senso has invested in the Illuminating Engineering Society (IES) TM 30-15, a new system that measures an LED light source's color rendering properties. Using Senso's state-of-the-art goniophotometer, this method identifies the optimal light source for your project and helps evaluate the trade-offs between efficacy and color rendering. Senso can provide TM 30-15 data for all of our products.

**Full Color Metric Info Available at Sensolighting.com*

LED Module Performance

Output: Up to 150 lumen/Watt

Efficacy: Color consistency within a 3-MacAdam Ellipse

CCT: 2500K - 6500K

Color Rendering: 90+ CRI

Min. R Values: R⁹ - 60 R^f - 90 R^a - 100

Driver and Power Consumption

Dimming: 1% dimming standard with 0.1% option

Casambi wireless control available

Ripple: Industry leading Low ripple

Efficiency: Power Factor >0.9

Efficiency over 85%

Class 2 output for safety

Installation: Remote mounted

Lumen Option	700lm	1000lm	1500lm	2000lm
Fixture Wattage	6.5W	9.3W	12.5W	20.2W
Delivered Lumen	656lm	1035lm	1347lm	1917lm